

SHOPS ON MAIN

2941 MAIN STREET GLASTONBURY, CONNECTICUT



LOCATION

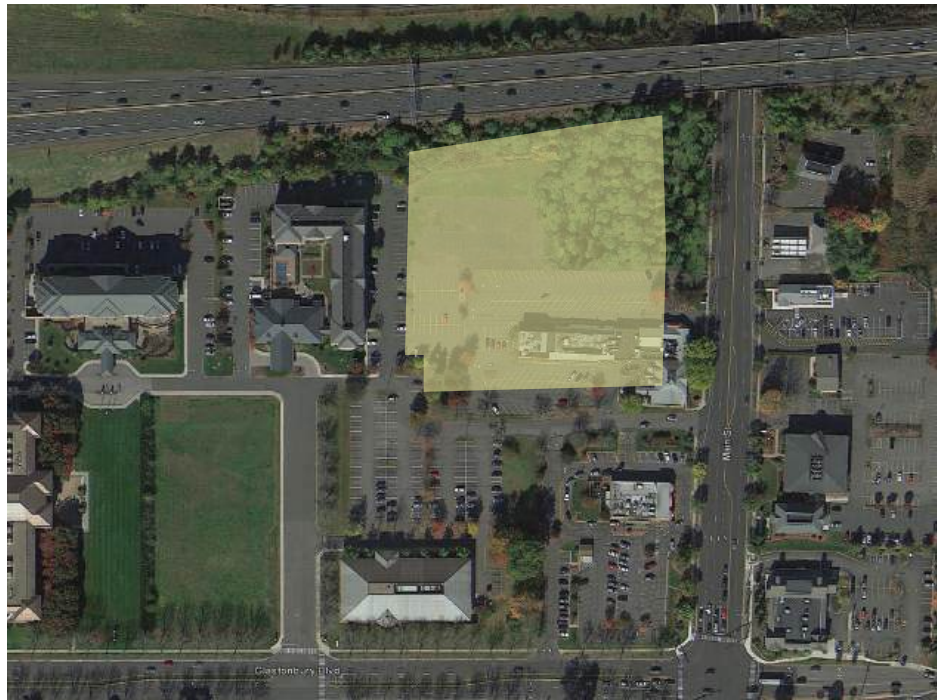
LOCATED RIGHT ON MAIN STREET,
AT 2941 MAIN STREET, WITH
EXCELLENT STREET FRONTAGE,
AND CLOSE PROXIMITY TO ROUTE 3
AND ROUTE 2

NEARBY

SHOPS AT SOMERSET SQUARE:
VICTORIA SECRETS, ANN TAYLOR,
CHICO'S, TALBOTS, J.JILL, WHITE
HOUSE BLACK MARKET. MINUTES
FROM WHOLE FOODS

NOTES

STRONG DAY TIME TRAFFIC WITH
OVER 8,200 EMPLOYEES WITHIN 1
MILE



LOCATION & DEMOGRAPHICS

| LAT/LON | GLA | PARKING | |
|-----------------------------|-----------|-----------|-----------|
| 41.7237/-72.6158 | 34,002 SF | 216 | |
| TRAFFIC COUNT | | CARS/DAY | |
| Route 3 | | 55,000 | |
| Route 2 | | 64,000 | |
| Main Street | | 16,000 | |
| Glastonbury Blvd. | | 14,000 | |
| 2023 | 1-MILE | 3-MILE | 5-MILE |
| Estimated Population | 7,125 | 48,843 | 188,441 |
| Estimated Employees | 7,961 | 33,599 | 139,540 |
| Estimated Average HH Income | \$117,753 | \$130,287 | \$108,583 |



SITE PLAN



TENANTS

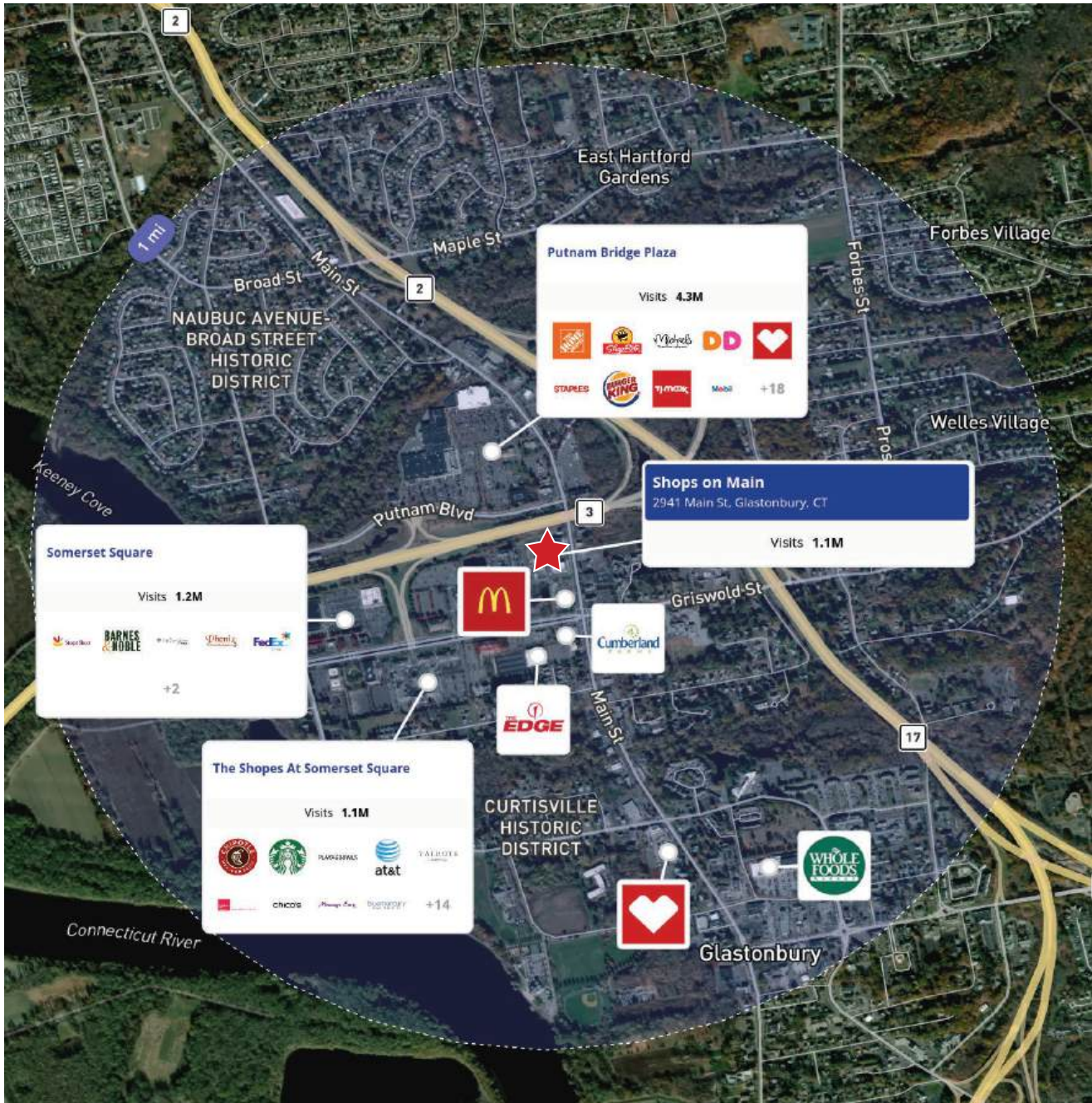
| | SF | W x L |
|-----------------------|----------|-------|
| Aspen Dental | 3,500 SF | |
| Banfield Pet Hospital | 3,633 SF | |
| Chick-fil-A | 4,850 SF | |
| Fresh Monkee | 1,200 SF | |
| Good Feet | 2,500 SF | |
| Jersey Mike's | 1,800 SF | |
| Magnolia Soap | 1,091 SF | |
| Physician One | 3,500 SF | |
| PizzaPie/Gyro Love | 2,223 SF | |
| Restore | 2,500 SF | |
| Sherwin Williams | 3,200 SF | |
| The Puppy Palace | 4,012 SF | |



AVAILABLE

SIGNED TENANT

TRADE MAP



FOR MORE INFORMATION, CONTACT:

Peter Flynn • 401.273.6800 x141 • PFlynn@CarpionatoGroup.com

Joe Pierik • 401.273.6800 x126 • JPierik@CarpionatoGroup.com