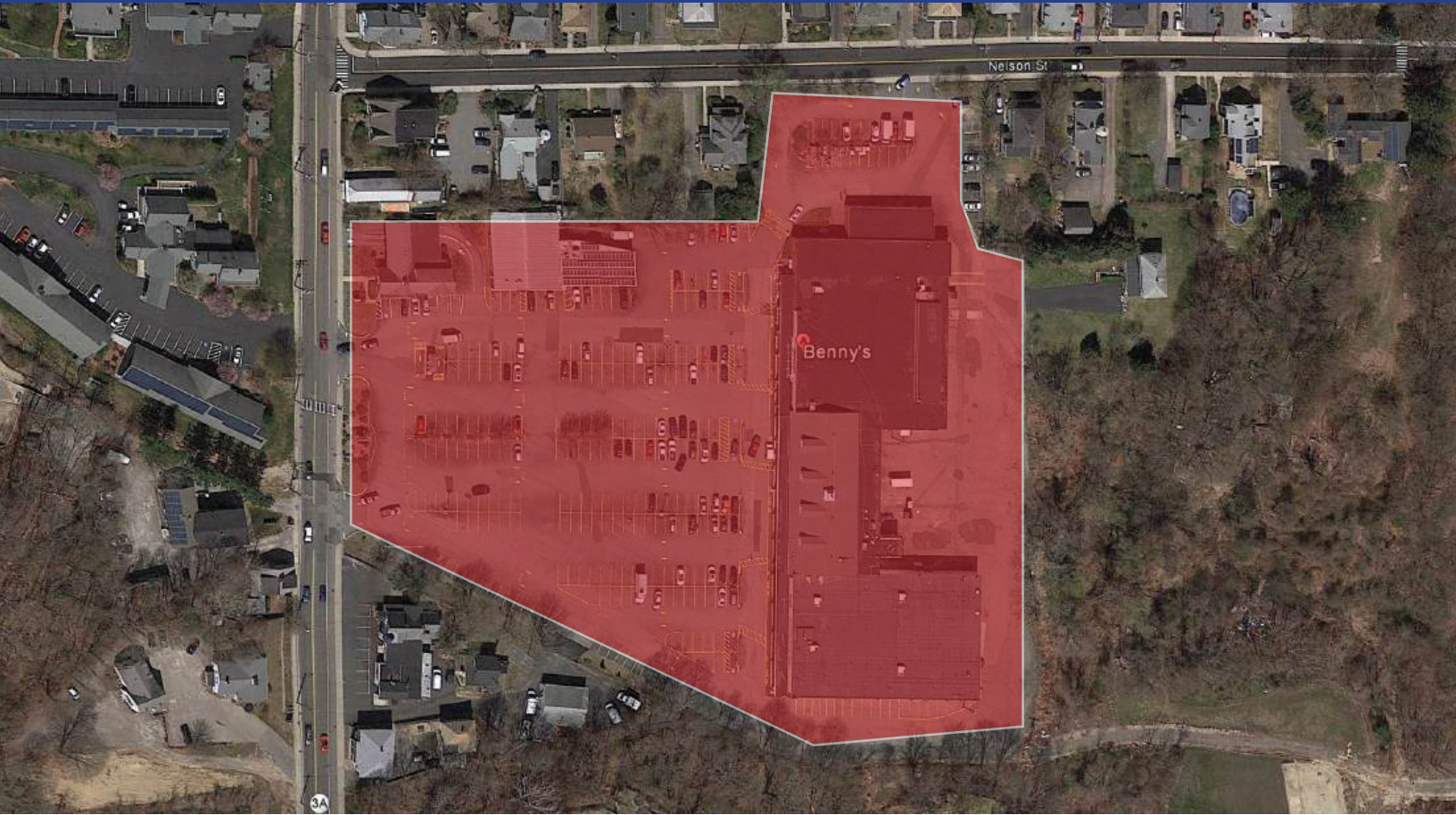


179 COURT STREET

PLYMOUTH, MASSACHUSETTS



LOCATION

Positioned within the affluent Plymouth community this site has strong demographics with an average household income of \$162,546 within a 5 mile radius.

SPACE

70,333 SF

NEARBY

Parks and historic landmarks including the well visited Plymouth Plantation and other attractions with the cultural district of Plymouth.

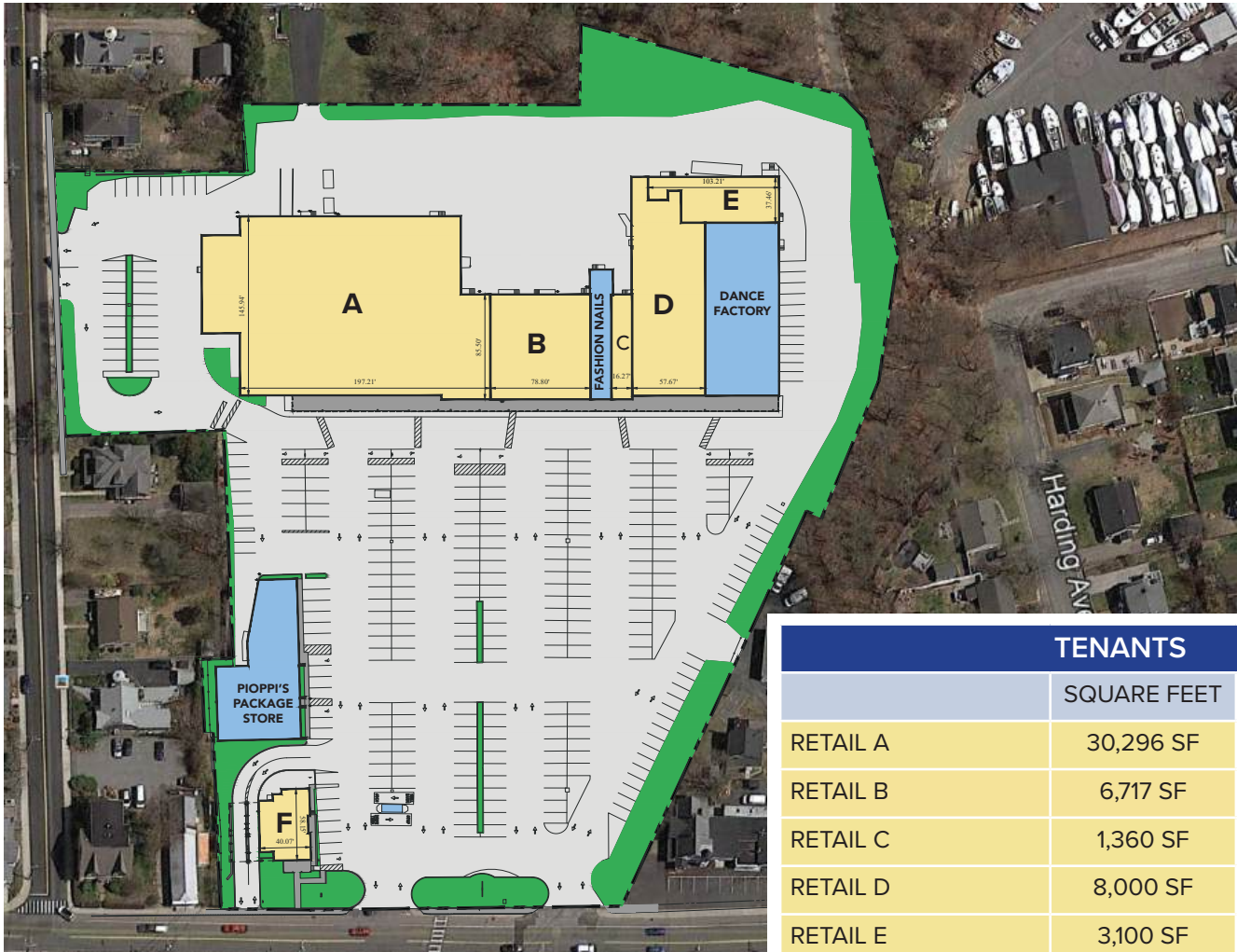


Photo by Jim Curran

LOCATION & DEMOGRAPHICS

LAT/LON	GLA	PARKING	
41.9651/-70.6744	70,333± SF	266	
TRAFFIC COUNT		CARS/DAY	
Court Street		15,000	
2023	1-MILE	3-MILE	5-MILE
Estimated Population	6,765	25,035	46,202
Estimated Average HH Income	\$104,808	\$130,991	\$162,546

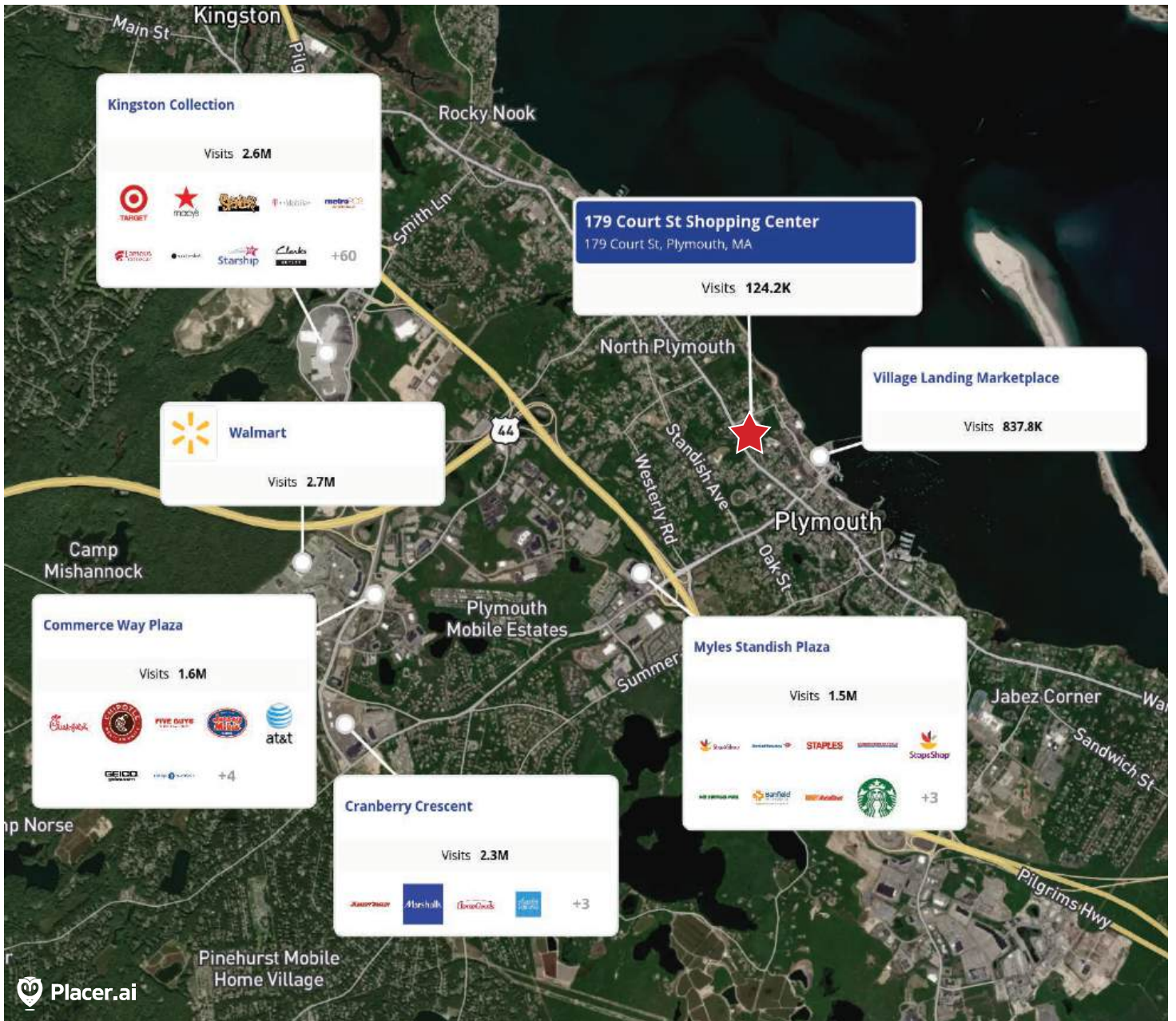
SITE PLAN



TENANTS		
	SQUARE FEET	WIDTH X LENGTH
RETAIL A	30,296 SF	197' x 146'
RETAIL B	6,717 SF	79' x 106'
RETAIL C	1,360 SF	16' x 106'
RETAIL D	8,000 SF	57' x 140'
RETAIL E	3,100 SF	37' x 103'
RETAIL F	3,000 SF	58' x 40'
Fashion Nails	1,660 SF	
Dance Factory	7,800 SF	
Pioppi's Package Store	8,400 SF	

 AVAILABLE
 SIGNED TENANTS

TRADE MAP



FOR MORE INFORMATION, CONTACT:

Peter Flynn • 401.273.6800 x141 • PFlynn@CarpionatoGroup.com

Joe Pierik • 401.273.6800 x126 • JPierik@CarpionatoGroup.com